



Town of Clifton Park

One Town Hall Plaza • Clifton Park, New York 12065 • (518) 371-6651 • FAX: (518) 371-1136

SEPTEMBER 30, 2009

CLIFTON PARK SEWER DEPARTMENT

RIVERCREST SEWER DISTRICT AND WESTERN CLIFTON PARK SEWER PROJECT UPDATE

Clifton Park, NY – The town would like to provide an update and timeline for construction as it relates to the Rivercrest Sewer District Extension No. 1.

In late August and early September, the Clifton Park Town Board and Niskayuna Central School District Board of Education approved plans and awarded contracts for the construction necessary to connect Glencliff Elementary School to the existing sewer infrastructure on Riverview Road, as shown on the attached schematic. That project is expected to begin later this week or early next week and be completed in mid- November. Service to the school expected by the end of November.

The Town of Clifton Park continues to work with the state Department of Audit and Control towards final approval of the Rivercrest Sewer District Extension, and continues to work with the Niskayuna school district, our engineers and contractors to bring down the cost of the project for all users. We expect final approvals within the next few weeks.

Based on this schedule, we plan to design and prepare bid documents to connect homes within Rivercrest Sewer District Extension No. 1 to the system, as well as the related improvements in the Olde Nott Farm Sewer District over the winter months, for construction in spring 2010.

While we have been able to bring down the cost of both the public laterals (those stump lines from the main line to individual property lines) to the extension as a whole, we continue to estimate that the cost to the typical homeowner will approximate \$20 per foot for each home to connect from individual property lines to plumbing fixtures within each the home. Also, the cost to fill existing septic systems is expected to be approximately \$300 per home. Homeowners should expect the per-foot construction cost on each parcel to include in-home connection.

There are no changes in these calculations from the informational meetings held last winter, both at Town Hall and at the Rexford firehouse regarding the formation of the district, and the estimates remain consistent with other recent projects in the area.

No action is needed at this time by residents in the Rivercrest Sewer District, however, any residents in the sewer district with questions are encouraged to call Mike O'Brien at 371-6651.

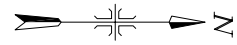
PHILIP C. BARRETT
Supervisor

LYNDA M. WALOWIT
Councilwoman

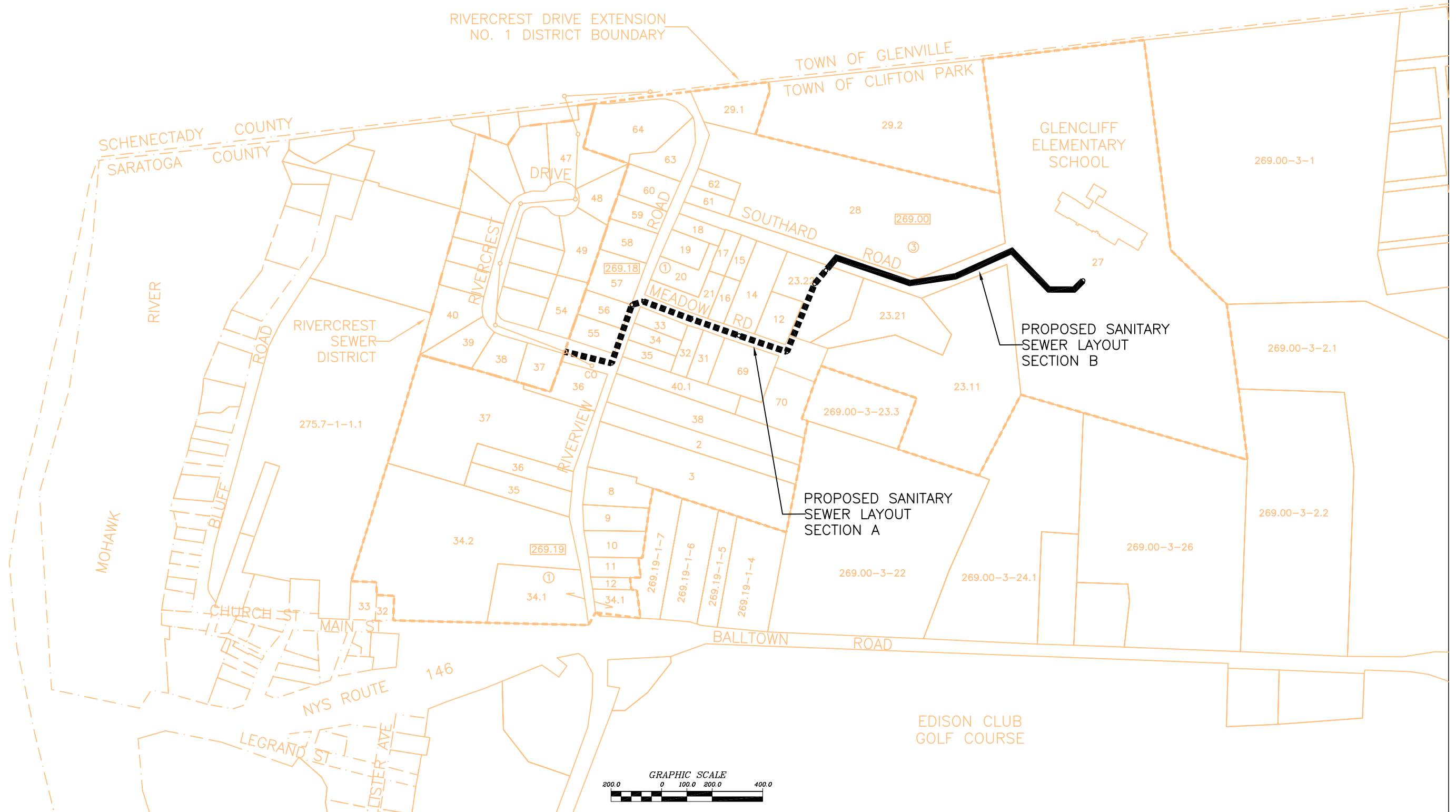
THOMAS E. PAOLUCCI
Councilman

SANFORD I. ROTH
Councilman

SCOTT HUGHES
Councilman



THE PURPOSE OF THIS MAP IS TO DEPICT THE TWO SECTIONS OF THE RIVERCREST SEWER DISTRICT EXTENSION NO. 1 SANITARY SEWER LINE TO BE FUNDED BY NISKAYUNA SCHOOL DISTRICT (N.S.D.). SECTION A WILL BE INSTALLED UNDER TOWN CONTRACT AND SECTION B WILL BE INSTALLED UNDER CONTRACT WITH N.S.D.



NO.	DATE	REVISION	ALTERATIONS OF THIS DOCUMENT EXCEPT BY A LICENSED PROFESSIONAL ENGINEER ARE ILLEGAL		John M. McDonald Engineering, P.C. Public Works Engineering Schenectady, New York	TOWN OF CLIFTON PARK Saratoga County, New York	PROJECT NAME: RIVERCREST DRIVE SEWER EXTENSION NO. 1	CONTRACT: DIVISION OF NISKAYUNA SCHOOL DISTRICT SEWER WORK	SHEET TITLE: PROPOSED SANITARY SEWER LAYOUT	
00	06/09	ORIGINAL ISSUE	PROJ. ENGR: JMCD DRAWN BY: JDT ASSEMBLED BY: JDT CHECKED BY: JMCD						SCALE: NOTED	REFERENCE NUMBER: 04-9101y1-100
									DATE: JUNE 2009	SHEET NO. 1